



---

**Entrepreneurship**  
as a strategic driver  
for change

---

# OUR VISION

To create a generation who are:

- EQUIPPED FOR LIFE
- CONFIDENT
- EAGER
- INVENTIVE
- CURIOUS
- AMBITIOUS

A group of students in a classroom setting, looking at a computer screen. The students are diverse in age and ethnicity. One student in the foreground is wearing a watch. The background shows a computer monitor and keyboard.

# WHAT IS AN ENTREPRENEURIAL COLLEGE?

An entrepreneurial college is where the whole ethos, value and culture of students, tutors and leaders is distinctively geared towards the task of **wealth creation, business formation and growth, and employment outcomes.**

# AN ENTREPRENEURIAL COLLEGE IS:

**CONNECTED:** To **networks**, **mentors** and **like-minded individuals**

---

**COLLABORATIVE:** Preparing students by encouraging a **confident** attitude to **risk** and gaining experience in **college-owned commercial businesses**

---

**INVENTIVE:** Encouraging **ambition**, **innovation** and **collaboration** throughout the organisation

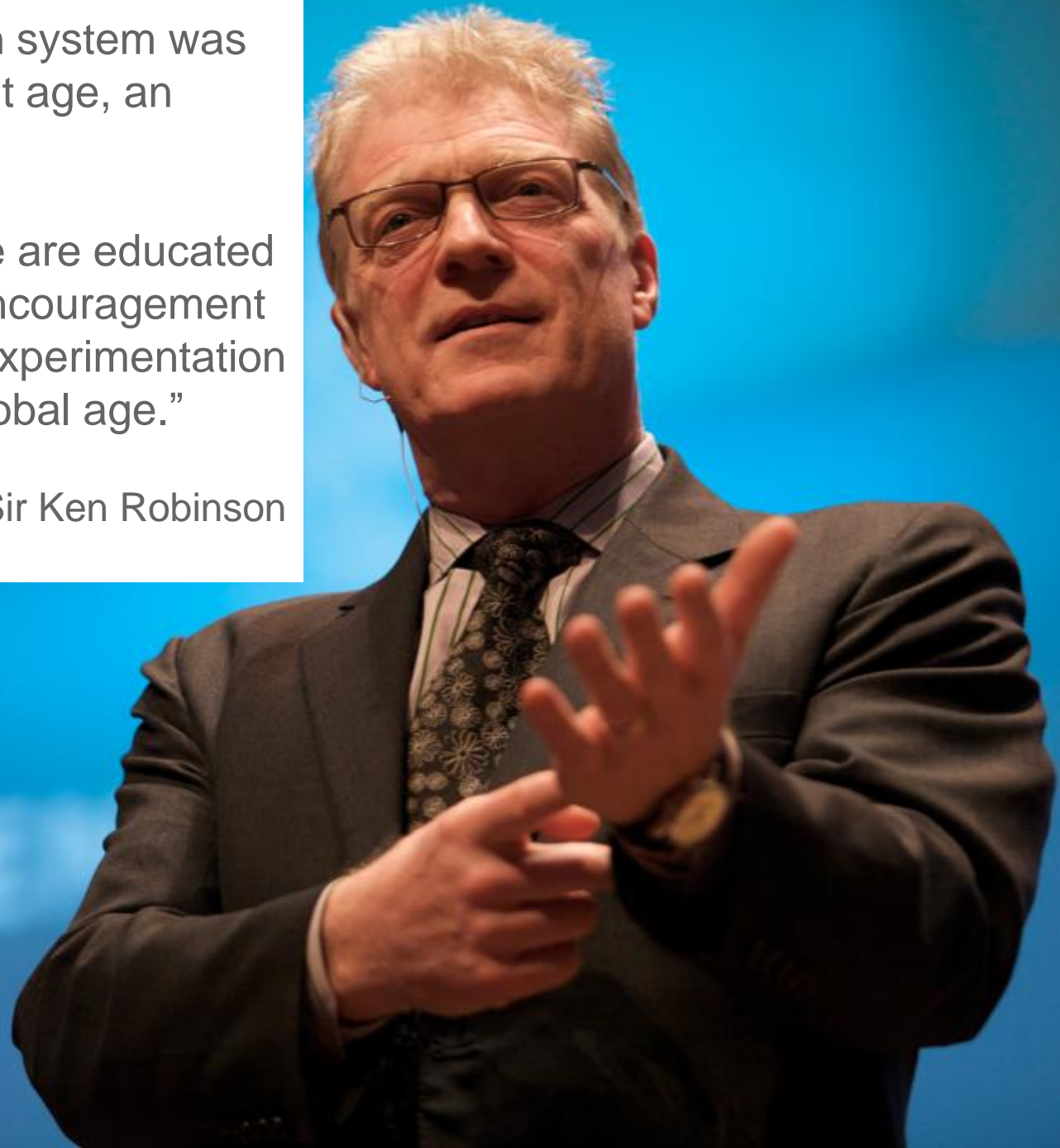


Why do we need  
transformation?

“Our current education system was designed for a different age, an industrial age...

...where young people are educated in batches with little encouragement for the creativity and experimentation that is needed for a global age.”

Sir Ken Robinson



# IN DANGER OF EMBEDDING FAILURE

- Worst youth unemployment rates for a generation: **1 in 5 young people**
- National unemployment currently stands at **2.46m** – unemployment for black women rising faster than any other group
- **55%** of this year's university graduates will be out of work six months after graduation
- Wolf Report: **400,000** teenagers are “wasting their time” on college courses with no job at the end
- Black workers are bearing the brunt of Britain's job crisis

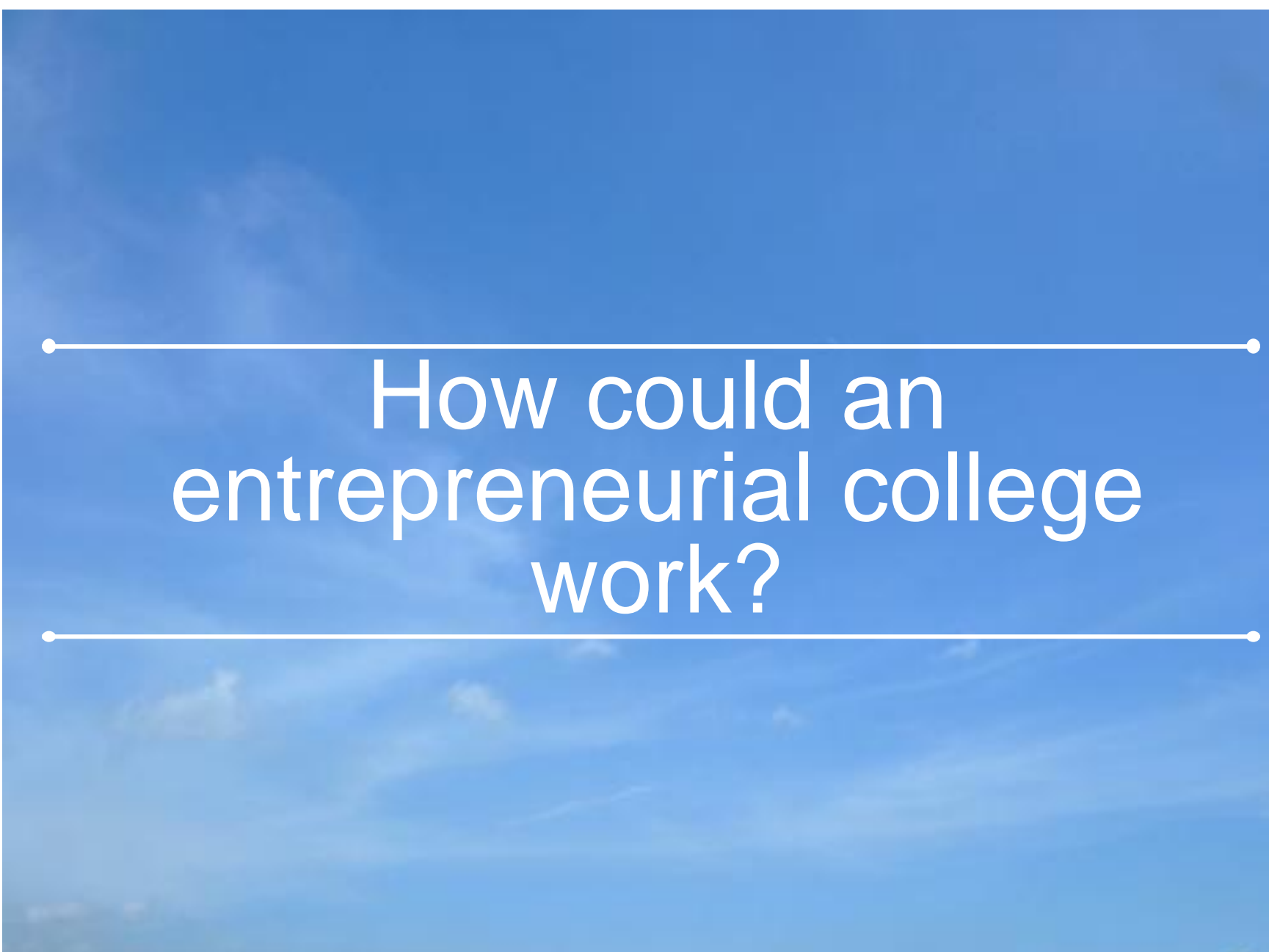
Our education system is in danger of embedding failure

# CARRYING HOPES OF A NEW GENERATION

## FE Colleges:

- Train and educate 3.4 million people each year
  - ✧ 55% women
  - ✧ 18% black or minority ethnic background
  - ✧ 12% disability or learning difficulty
- Employ 265,000 people





How could an  
entrepreneurial college  
work?

# THE ENTREPRENEURIAL MINDSET

Foster an entrepreneurial mindset throughout the college - in students, tutors and leaders

- **LEARNING:** The way you learn is as important as what you learn
- **SHIFTING THE FOCUS:** From qualifications to qualities
- **RISK TAKING:** Creating an environment where informed risk is encouraged as a pre-requisite for innovation

# ENTREPRENEURIAL LEARNING



## NEW LEARNING MODEL:

Offering more than just a concept

---

**PRACTICAL ACTION:** Real world learning, skills and contracts

---

**SOCIAL IMPORTANCE:** Creating new business opportunities and wealth in communities

---

**DELIVERING OPTIMISM:** Increasing individual earning potential

---

# AN ENTREPRENEURIAL WORKFORCE

- That is entrepreneurial because it learns experientially
- Operating across the private and public sector
- Measuring its value in terms of student start ups, employment and achievement

# ENTREPRENEURIAL LEADERSHIP

THINKING  
DIFFERENTLY



Embracing an agenda for a different type of college that encourages wealth and risk-taking

CREATING  
OPPORTUNITY



Recognising a public sector model working with the private sector

SHAPING THE  
DEBATE



Making a commitment

# ENTREPRENEURIAL LEADERS

eager  
prepared  
experienced  
leader  
influential  
confident

capable  
inventive  
ambitious  
trained  
visionary  
confident



**CHRISTINA  
CONROY  
OBE**



**STELLA  
MBUBAEGBU  
CBE**



**ELAINE  
BOWKER**



**MAUREEN  
MELLOR  
MBE**



**IAN  
MILLARD**



**GILL  
CLIPSON**



**GRAHAM  
MORLEY**



**ROBERT G  
MCGRORY**



**DICK  
PALMER**



**RICHARD  
THOROLD**



**MARION  
PLANT  
OBE**



**DI  
DALE**



**AMARJIT  
BASI**



**SALLY  
DICKETTS**



**MARTIN  
DOEL OBE**



**MATT  
ATKINSON**



**DAME  
JACKIE  
FISHER**



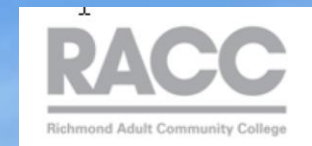
**FINTAN  
DONOHUE**



**JACQUI  
MACE**



# Entrepreneurial INTENT





CAROLINE CASEY

Founder, Kanchi

*Kanchi works with decision makers and leaders to promote the Disability Business Case through unique, innovative and effective initiatives.*

“The problem she had identified was the negative mindset around disability – the fact that nobody talked about the abilities of people with disabilities and the value that they could bring to the social and business world...”